

# Crew Accommodation on a +3000GT Yacht

## Implications of MLC 2006

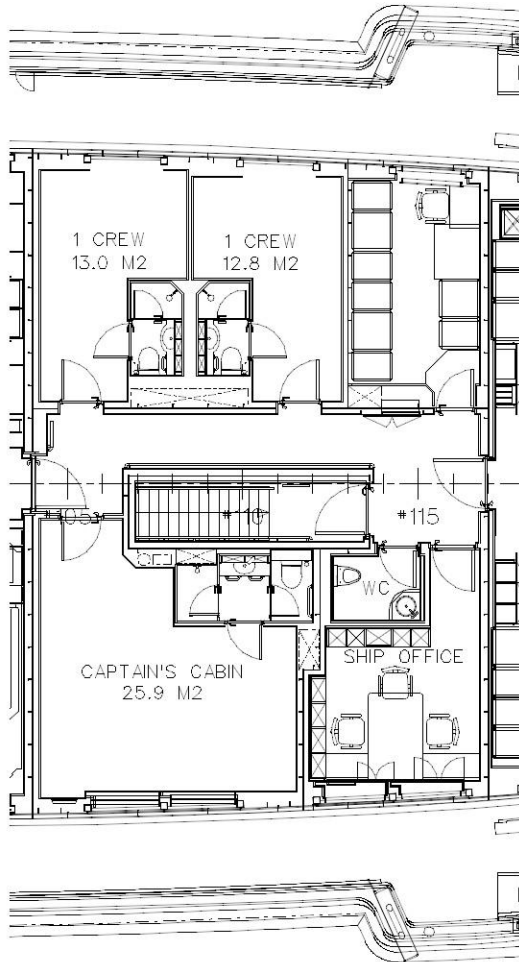


Jonathan Strachan  
Burness Corlett Three Quays

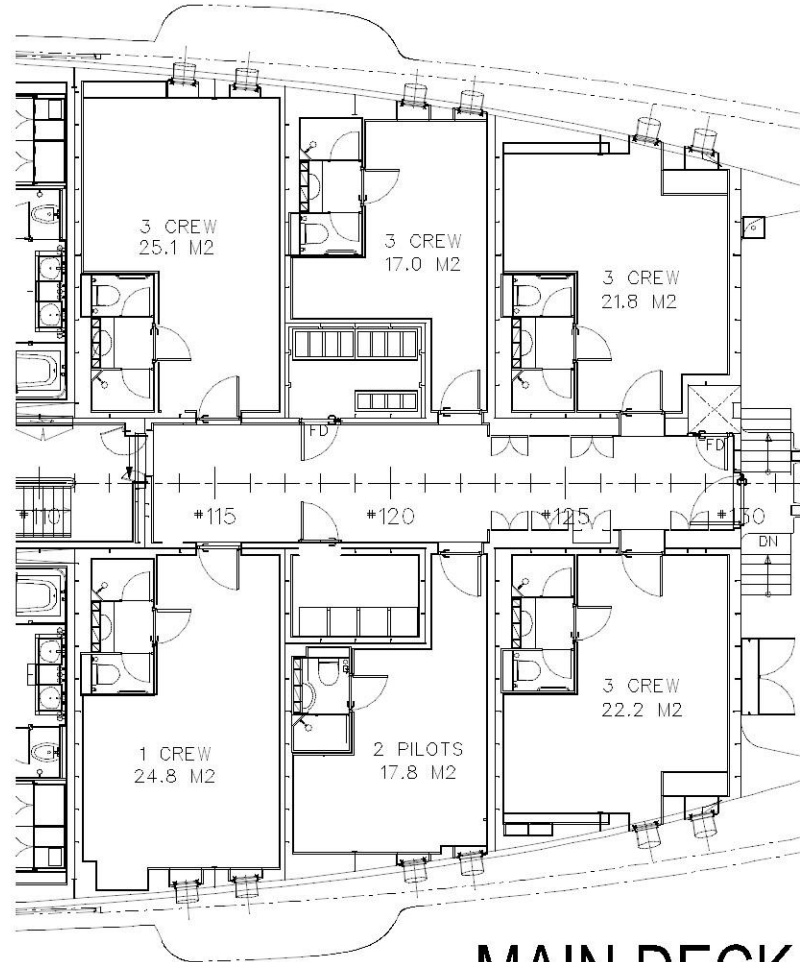
- **Short description of the yacht**
- **Arrangement of crew accommodation**
- **Listing areas of cabins etc**
- **Show that yacht complies with the requirements.**

- Length Overall >110 metres
- Gross Tonnage >5000
- 
- Guest (Passenger) Complement 18
- Crew Complement 47
- Pilots 2
  
- Built as a SOLAS passenger ship
- Therefore considered to be a passenger ship for MLC.

# Cabin Arrangement

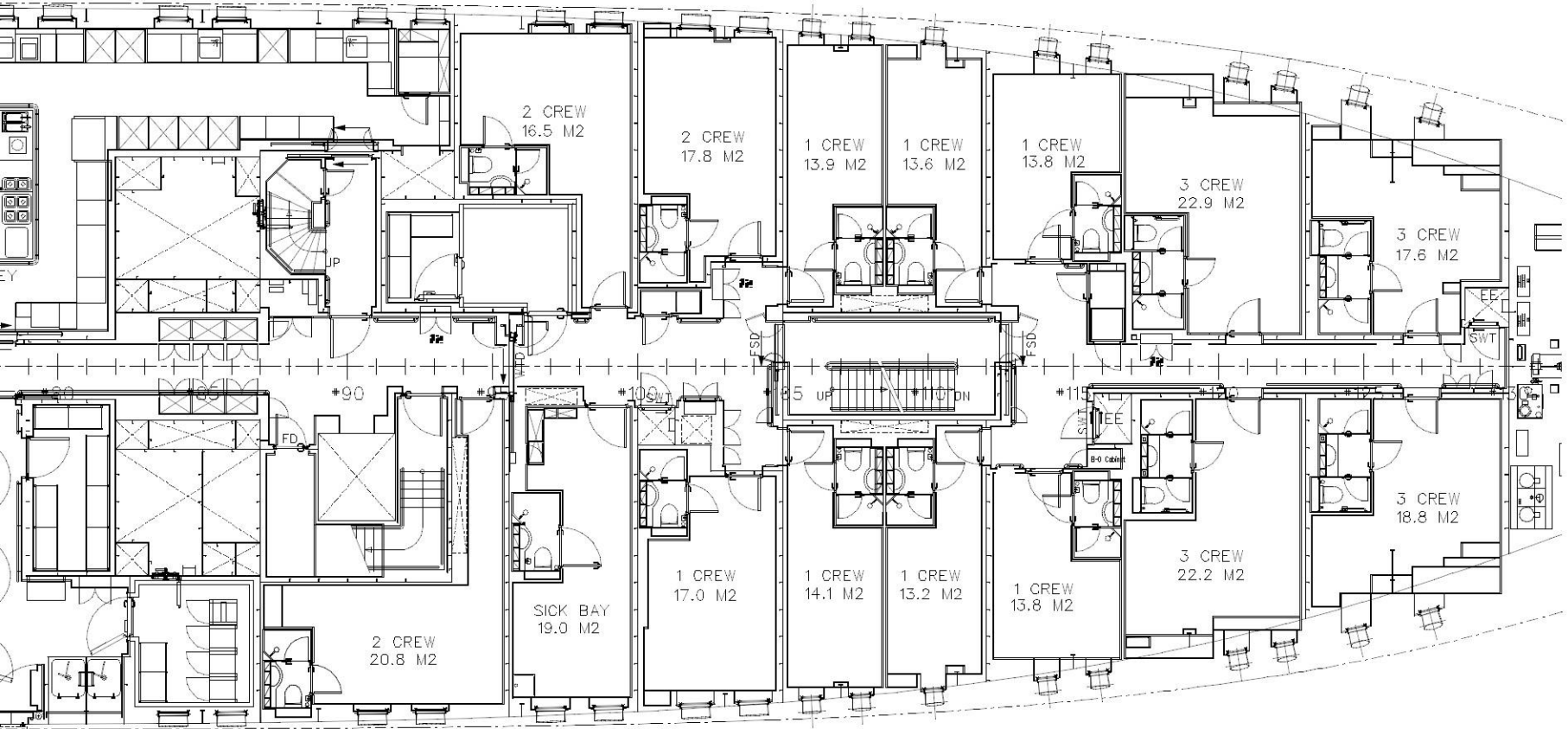


BRIDGE DECK



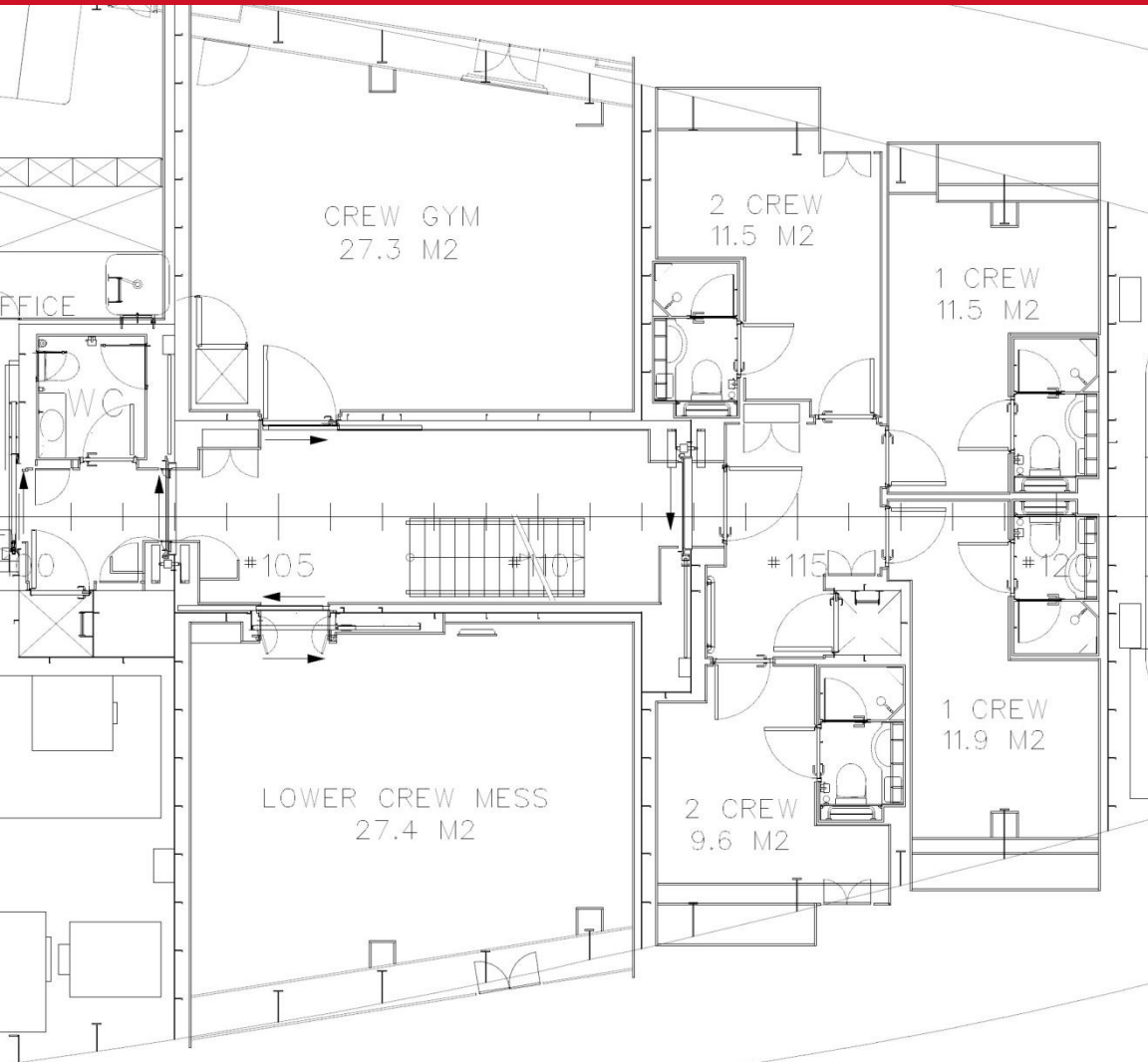
MAIN DECK

# Cabin Arrangement



## CABIN DECK

# Cabin Arrangement



## LOWER DECK

# Cabin Arrangement

|             |                    |   |
|-------------|--------------------|---|
| Lower Deck  | 2 x 1 berth        | min 11.5m <sup>2</sup>                    |
|             | 2 x 2 berth        | min 9.6m <sup>2</sup>                     |
|             | Gymnasium          | 27m <sup>2</sup>                          |
|             | Lower mess room    | 28m <sup>2</sup> for seating 15 persons   |
| Cabin Deck  | 7 x 1 berth        | min 13.2m <sup>2</sup>                    |
|             | 3 x 2 berth        | min 16.5m <sup>2</sup>                    |
|             | 4 x 3 berth        | min 17.6m <sup>2</sup>                    |
|             | Sick bay           | 19.0m <sup>2</sup>                        |
|             | Crew Mess          | 57.1m <sup>2</sup> for seating 42 persons |
| Main Deck   | 1 x 1 berth        | 24.8m <sup>2</sup>                        |
|             | 4 x 3 berth        | min 17.0m <sup>2</sup>                    |
|             | 1 x 2 berth pilots | 17.8m <sup>2</sup>                        |
| Bridge Deck | Captain 1 berth    | 25.9m <sup>2</sup>                        |
|             | 2 x 1 berth        | min 12.8m <sup>2</sup>                    |

# Comparison with MLC 2006

| Cabin          | Required area       | Actual Area                            |
|----------------|---------------------|--|
| Single Cabin   | 5.5m <sup>2</sup>   | Smallest single<br>11.5 m <sup>2</sup> |
| Double Cabin   | 7.5m <sup>2</sup>   | Smallest Double<br>9.6 m <sup>2</sup>  |
| Triple Cabins  | 11.5 m <sup>2</sup> | Smallest 17.0 m <sup>2</sup>           |
| Junior Officer | 7.5 m <sup>2</sup>  | Smallest 12.6 m <sup>2</sup>           |
| Senior Officer | 8.5 m <sup>2</sup>  | Smallest 13.2 m <sup>2</sup>           |

Therefore we can conclude that all cabins comply.

The lower deck is 1900mm below the load line.

*However this is acceptable for passenger ships under the following ruling.*

*Reg. 3.1.6 (d) In passenger ships...the competent authority may...permit the location of sleeping rooms below the load line.*

# Comparison with MLC 2006

| MLC             | Required area  | Actual Area   |
|-----------------|--|---|
| Mess Room       | Cargo Ship<br>1.5m <sup>2</sup> / Crew<br><br>No Pax Ship<br>Requirement | Crew Mess +<br>Lower Crew Mess<br>1.95m <sup>2</sup> / Crew |
| Sick Bay        | Provided   |   |
| Laundry         | Provided   |   |
| Open Deck Space | Provided   |   |

- **Crew accommodation is compliant with MLC 2006**

Thank You.

